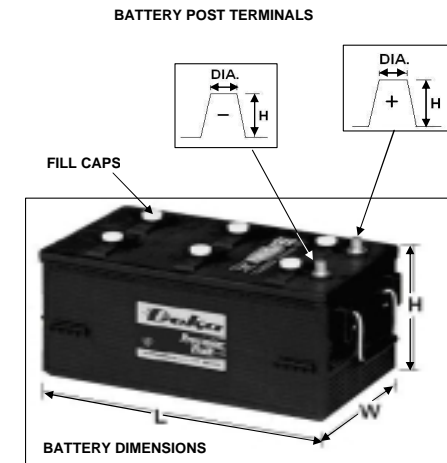
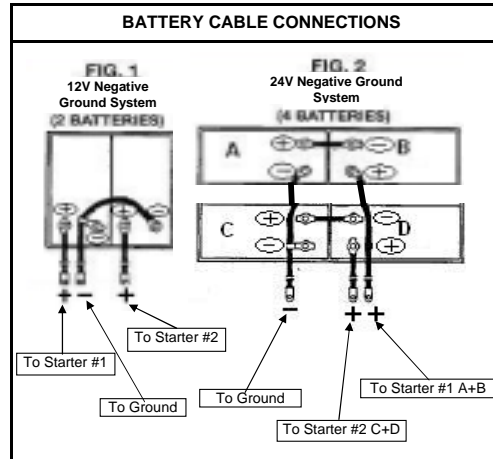


CLARKE USA SUPPLIED LEAD-ACID BATTERY SPECIFICATIONS

Clarke P/N	Battery Model #	SAE # per J537	Mfg.	Charge? Wet/Dry	Volts (V)	Dimensions L x W x H in. (mm)	Weight		Post Connector Dimensions in. (mm) Dia. x H		Number of Quarts of Battery Acid (Liters)	PERFORMANCE DATA			
							Wet lb (kg)	Dry lb (kg)	positive	negative		Cold Cranking Amps @ 0° F (CCA) ^{3A}	Cranking Amps @ 32° F (CA)	Reserve @ 80° F (min) ^{3B}	Rating @ 80° F (Amp Hours)
C07634	904D-DRY	4D-640	DEKA	Dry	12	20.75 x 8.50 x 10.50	98 (44.5)	58 (26.3)	3/4 x 3/4	5/8 x 3/4	16 (15.1)	1010	1235	290	135
						(512.1 x 215.9 x 266.7)			(19.1 x 19.1)	(15.9 x 19.1)					
C07633	908D-DRY	8D-900	DEKA	Dry	12	20.75 x 11.00 x 10.00	130.5 (59.2)	80 (36.3)	3/4 x 3/4	5/8 x 3/4	18.5 (17.5)	1300	1550	430	185
						(521.1 x 279.4 x 254)			(19.1 x 19.1)	(15.9 x 19.1)					

BATTERY REQUIRED		
Engine Model	Battery Model #	Battery P/N
JU4H-UF10/12/14/20/22/24/28/30/32/34/H8/H0/H2/40/42/44/58/50/52/54/84	904D-DRY	C07634
JU6H-UFD0/D2/30/32/34/G8/M8/M0/M2/58/50/52/54/68/60/62/84		
JW6H-UF38/30/48/40/58/50/60	908D-DRY	C07633
JX6H-UF30/40/50/60/70		



- Notes:
- Battery equipped with handles or lifting edges.
 - Battery Construction- polypropylene container and cover.
 - Meets SAE storage battery requirements for SAE J537 JUN92
 - While discharging specified amps, the battery voltage across terminals after 30 seconds is 1.2 Volts/cell or greater.
 - Time (minutes) to discharge battery at 25 amps when voltage across battery terminals has fallen to 1.75 Volts/cell.
 - Battery should set into a battery rack on 1/2" plywood (or equal) to provide insulation and support.

4

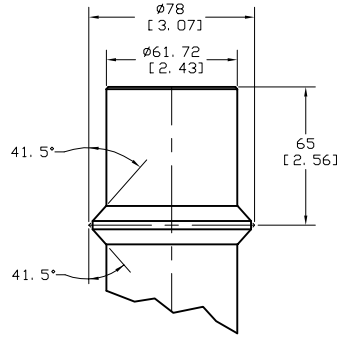
3

2

1

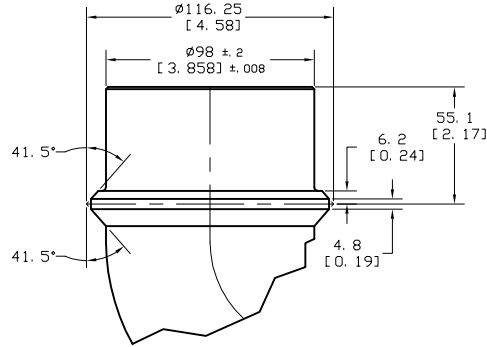
JU4H-NA MODELS

JU4H-UF10, -UF12, -UF14, -UF20, -UF22, -UF24

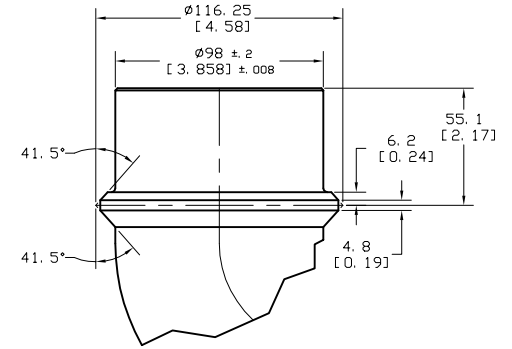


JU4H-T MODELS

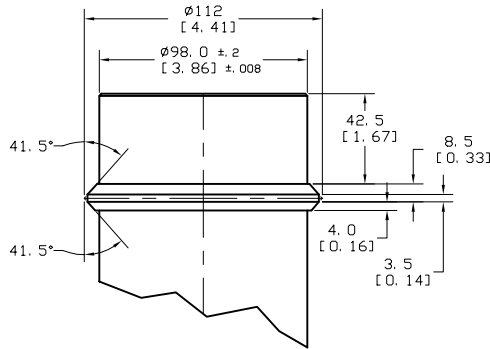
JU4H-UF28, -UF30, -UF32, -UF34, -UFH8, -UFH0, -UFH2
-UF40, -UF42, -UF44, -UF58, -UF50, -UF52, -UF54, -UF84



JU6H- ALL MODELS

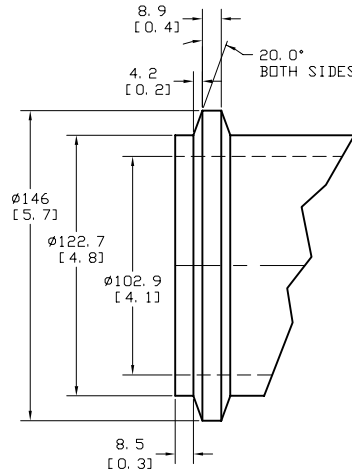


JW6H- ALL MODELS



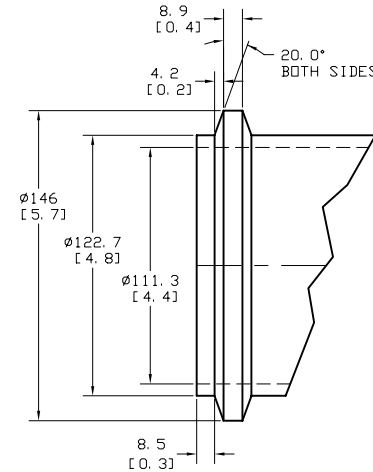
JX6H- TJWA

JX6H-UF30



JX6H- TRWA

JX6H-UF40, -UF50, -UF60, -UF70



D

C

B

A

D

C

B

A

REV	DESCRIPTION	ECN#	DWN	APVD	DATE
A	ISSUED ENGINEERING DRAWING	494	MAL	KRW	16JUN05

THIS DRAWING AND THE INFORMATION HEREON ARE OUR PROPERTY AND MAY BE USED BY OTHERS ONLY AS AUTHORIZED BY US. UNPUBLISHED--ALL RIGHTS RESERVED UNDER THE COPYRIGHT LAWS.

UNLESS OTHERWISE SPECIFIED TO DIMENSIONS ARE: MM IN

DECIMAL .XX #1.9 #0.06

FRACTIONAL 0/16 #0.25 #0.01

ANGULAR #1/32

SIMILAR TO # 2"

CONTROLLED DRAWING

DRWN: MALAUER
DATE: 16JUN05
ENGR: KRWAULIGMAN

CLARKE
Fire Protection Products, Inc.

EXHAUST OUTLET DETAIL
JD-ENGINE MODELS

PART NO: D550

SCALE: NTS UNITS: MM [INCH]

PAGE 1 OF 1

4

3

2

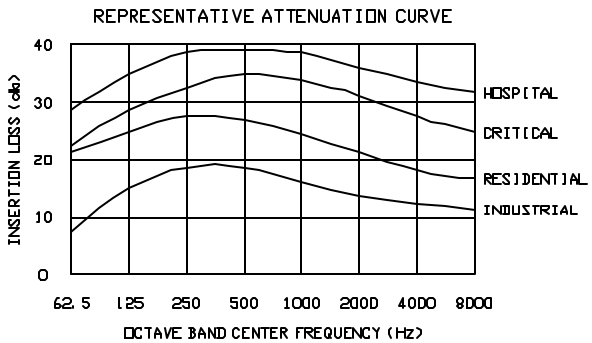
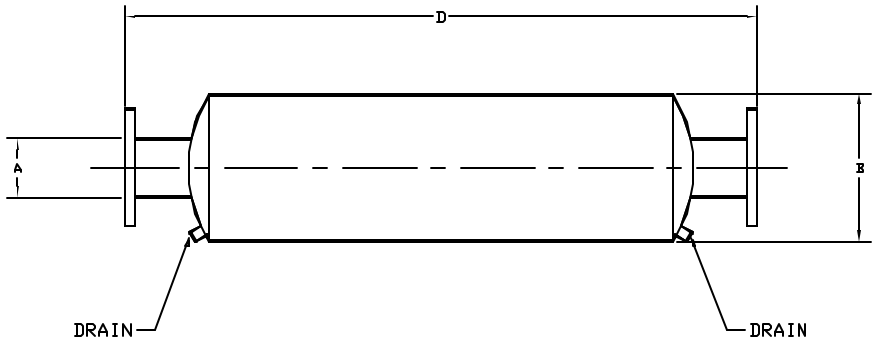
1

1"-3.5" NPT CONNECTIONS

CRITICAL					RESIDENTIAL					INDUSTRIAL					HOSPITAL				
CDDA P/N	A	B	D	Wgt#	CDDA P/N	A	B	D	Wgt#	CDDA P/N	A	B	D	Wgt#	CDDA P/N	A	B	D	Wgt#
C06512	1.0	4.0	30.0	6	C06526	1.0	4.0	24.0	5	-----	1.0	4.0	---	-	C06714	1.0	---	---	---
C06513	1.5	6.0	30.0	10	C06527	1.5	6.0	24.0	8	-----	1.5	6.0	---	-	C06715	1.5	---	---	---
C06514	2.0	6.0	42.0	29	C06528	2.0	6.0	30.0	17	C06540	2.0	6.0	24.0	12	C06716	2.0	10.0	44.0	44
C06515	2.5	8.0	42.0	38	C06529	2.5	8.0	30.0	24	C06541	2.5	8.0	24.0	18	C06717	2.5	12.0	46.0	50
C06516	3.0	8.0	42.0	43	C06530	3.0	8.0	31.0	26	C06542	3.0	8.0	25.0	20	C06718	3.0	12.0	46.0	50
C06517	3.5	10.0	55.0	58	C06531	3.5	10.0	43.0	42	C06543	3.5	10.0	31.0	30	C06719	3.5	14.0	60.0	72

4"-16" MATCHES 125# ASA FLANGE

CRITICAL					RESIDENTIAL					INDUSTRIAL					HOSPITAL				
CDDA P/N	A	B	D	Wgt#	CDDA P/N	A	B	D	Wgt#	CDDA P/N	A	B	D	Wgt#	CDDA P/N	A	B	D	Wgt#
C06518	4.0	10.0	56.0	64	C06532	4.0	10.0	44.0	44	C06544	4.0	10.0	32.0	31	C06720	4.0	14.0	60.0	74
C06519	5.0	12.0	68.0	84	C06533	5.0	12.0	56.0	54	C06545	5.0	12.0	44.0	45	C06721	5.0	18.0	68.0	160
C06520	6.0	12.0	68.0	86	C06534	6.0	12.0	56.0	68	C06546	6.0	12.0	44.0	50	C06722	6.0	18.0	68.0	165
C06521	8.0	18.0	92.0	249	C06535	8.0	18.0	68.0	135	C06547	8.0	18.0	56.0	120	C06723	8.0	26.0	96.0	325
C06522	10.0	22.0	108.0	370	C06536	10.0	22.0	84.0	220	C06548	10.0	22.0	72.0	180	C06724	10.0	30.0	110.0	450
C06523	12.0	26.0	120.0	506	C06537	12.0	26.0	96.0	325	C06549	12.0	26.0	72.0	250	C06725	12.0	36.0	126.0	740
C06524	14.0	30.0	132.0	743	C06538	14.0	30.0	120.0	505	C06550	14.0	30.0	84.0	375	C06726	14.0	42.0	138.0	1130
C06525	16.0	36.0	160.0	1050	C06539	16.0	36.0	136.0	870	C06551	16.0	36.0	100.0	470	C06727	16.0	42.0	162.0	1150



- NOTES**
- 1-MAY BE MOUNTED HORIZONTALLY OR VERTICALLY.
 - 2-HIGH TEMPERATURE PRIMER, STANDARD.
 - 3-EQUIPPED WITH DRAIN.
 - 4-ALL WELD CONSTRUCTION.

REV	REVISION	ISSUED BY	DATE	APP'D	DATE	REV	REVISION	ISSUED BY	DATE	APP'D	DATE	REV	REVISION	ISSUED BY	DATE	APP'D	DATE
A	ISSUED DRAWING	DMP	02.11.92	JTV													
B	ADDED HOSPITAL GRADE	TP		JHWAY28													

DESIGNED BY	DATE	APP'D	DATE

CHKD	DATE	APP'D	DATE

SCALE	DATE	APP'D	DATE
NONE			

NO. OF SHEETS	TOTAL SHEETS
1	1

SILENCER, EXHAUST

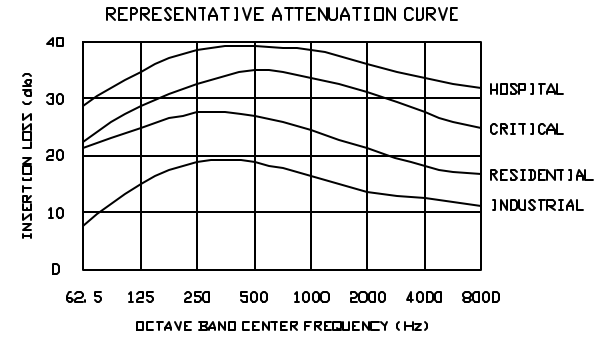
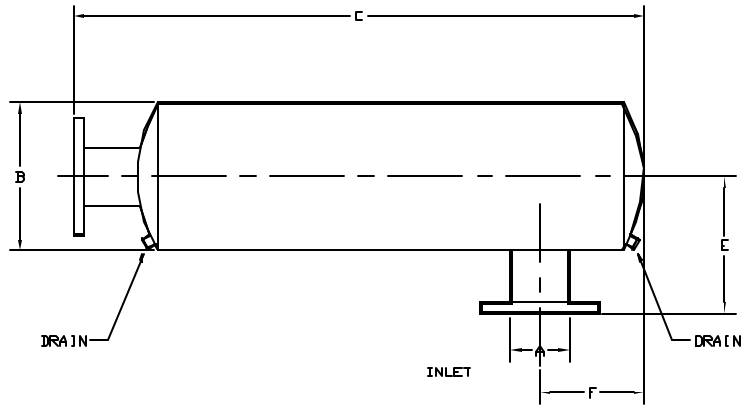
D-451

1"-3.5" NPT CONNECTIONS

CRITICAL							RESIDENTIAL							INDUSTRIAL							HOSPITAL						
CDDA P/N	A	B	C	E	F	Wgt#	CDDA P/N	A	B	C	E	F	Wgt#	CDDA P/N	A	B	C	E	F	Wgt#	CDDA P/N	A	B	C	E	F	Wgt#
CD6552	1.0	4.0	27.75	4.0	5.25	6	CD6566	1.0	4.0	21.75	4.0	2.75	5	-----	1.0	---	-----	4.0	---	---	CD6728	1.0	---	---	---	---	---
CD6553	1.5	6.0	27.75	5.0	5.25	10	CD6567	1.5	6.0	21.75	5.0	2.75	8	-----	1.5	---	-----	5.0	---	---	CD6729	1.5	---	---	---	---	---
CD6554	2.0	6.0	39.75	5.5	7.25	29	CD6568	2.0	6.0	28.00	5.5	3.00	17	CD6580	2.0	6.0	22.00	5.5	3.00	12	CD6730	2.0	10.0	41.5	8.5	5.50	44
CD6555	2.5	8.0	39.00	6.5	7.38	38	CD6569	2.5	8.0	28.50	6.5	3.60	24	CD6581	2.5	8.0	22.20	6.5	3.70	18	CD6731	2.5	12.0	42.5	10.0	7.75	50
CD6556	3.0	8.0	40.62	7.0	7.38	49	CD6570	3.0	8.0	29.00	7.0	4.10	26	CD6582	3.0	8.0	22.70	7.0	4.20	20	CD6732	3.0	12.0	42.5	10.0	7.75	50
CD6557	3.5	10.0	53.00	8.0	9.25	58	CD6571	3.5	10.0	41.00	8.0	5.00	42	CD6583	3.5	10.0	29.00	8.0	5.00	30	CD6733	3.5	14.0	56.5	11.0	9.50	72

4"-16" MATCHES 125# ASA FLANGE

CRITICAL							RESIDENTIAL							INDUSTRIAL							HOSPITAL						
CDDA P/N	A	B	C	E	F	Wgt#	CDDA P/N	A	B	C	E	F	Wgt#	CDDA P/N	A	B	C	E	F	Wgt#	CDDA P/N	A	B	C	E	F	Wgt#
CD6558	4.0	10.0	53.50	8.5	9.25	64	CD6572	4.0	10.0	41.50	8.5	5.50	44	CD6584	4.0	10.0	29.50	8.5	5.50	31	CD6734	4.0	14.0	56.5	11.0	9.50	74
CD6559	5.0	12.0	65.62	10.0	12.25	84	CD6573	5.0	12.0	54.00	10.0	6.60	54	CD6585	5.0	12.0	41.60	10.0	6.60	45	CD6735	5.0	18.0	66.5	13.0	10.50	160
CD6560	6.0	12.0	65.62	10.0	12.25	86	CD6574	6.0	12.0	54.00	10.0	7.60	68	CD6586	6.0	12.0	41.60	10.0	7.60	50	CD6736	6.0	18.0	66.5	13.0	10.50	165
CD6561	8.0	18.0	90.50	13.0	16.50	249	CD6575	8.0	18.0	66.50	13.0	10.50	155	CD6587	8.0	18.0	54.50	13.0	10.50	120	CD6737	8.0	26.0	93.5	17.0	17.50	325
CD6562	10.0	22.0	105.00	15.0	20.00	370	CD6576	10.0	22.0	81.00	15.0	15.00	220	CD6588	10.0	22.0	69.00	15.0	15.00	180	CD6738	10.0	30.0	108.0	19.0	20.00	450
CD6563	12.0	26.0	117.50	17.0	21.50	506	CD6577	12.0	26.0	93.50	17.0	17.50	325	CD6589	12.0	26.0	69.50	17.0	17.00	250	CD6739	12.0	36.0	122.0	22.0	23.00	750
CD6564	14.0	30.0	130.00	19.0	23.00	743	CD6578	14.0	30.0	118.00	19.0	20.00	505	CD6590	14.0	30.0	82.00	19.0	20.00	375	CD6740	14.0	42.0	135.0	25.0	24.00	1130
CD6565	16.0	36.0	157.00	22.0	29.00	1050	CD6579	16.0	36.0	133.00	22.0	23.00	870	CD6591	16.0	36.0	97.00	22.0	23.00	470	CD6741	16.0	42.0	159.0	25.0	28.00	1150



- NOTES
- 1-MAY BE MOUNTED HORIZONTALLY OR VERTICALLY.
 - 2-HIGH TEMPERATURE PRIMER, STANDARD.
 - 3-EQUIPPED WITH DRAIN.
 - 4-ALL WELD CONSTRUCTION.

REV	REVISION	DRN	APPD	DATE	REV	DATE	BY	CHKD	DATE
A	ISSUED DRAWING	DMP	JTV	23 JUL 92					
B	ADDED HOSPITAL BRANCH	TP	JHWATER						

DESIGNED BY	DATE	BY	CHKD	DATE

SCALE	UNIT	INCH	FRAC	OF
NONE				

ELARK
 ELECTRONIC DESIGN - ALLISON
 6100 EAST KODER ROAD, DENVER, CO 80231

SILENCER, EXHAUST

SIZE D PART NO D-451

DRN N APPD JTV SCALE NONE UNIT INCH